

Dr Mariska Leeflang

Dept. Clinical Epidemiology, Biostatistics and  
Bioinformatics

Academic Medical Center, University of Amsterdam

Room J1B - 210

PO Box 227700

1100 DE Amsterdam

m.m.leeflang@amc.uva.nl



---

# Quality assessment of diagnostic test accuracy studies

Montreal, Monday May 25<sup>th</sup>, 2009

Mariska Leeflang



# Steps in a systematic review

---

1. Formulating the question  
(and defining criteria for inclusion of studies)
2. Searching for studies
3. Selecting studies
4. Collecting data
5. Assessing methodological quality
6. Analysing and presenting results
7. Interpreting results



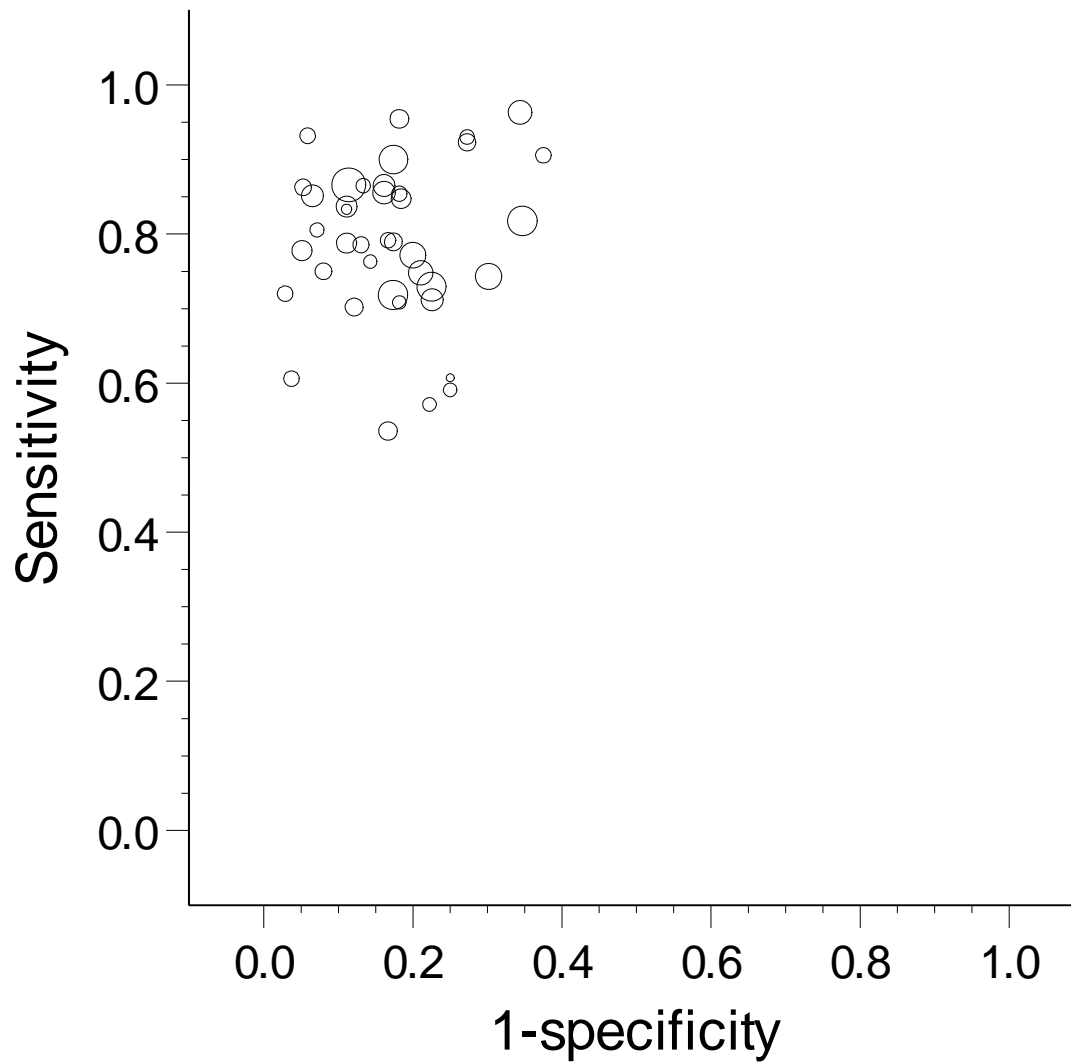
# Quality assessment

---

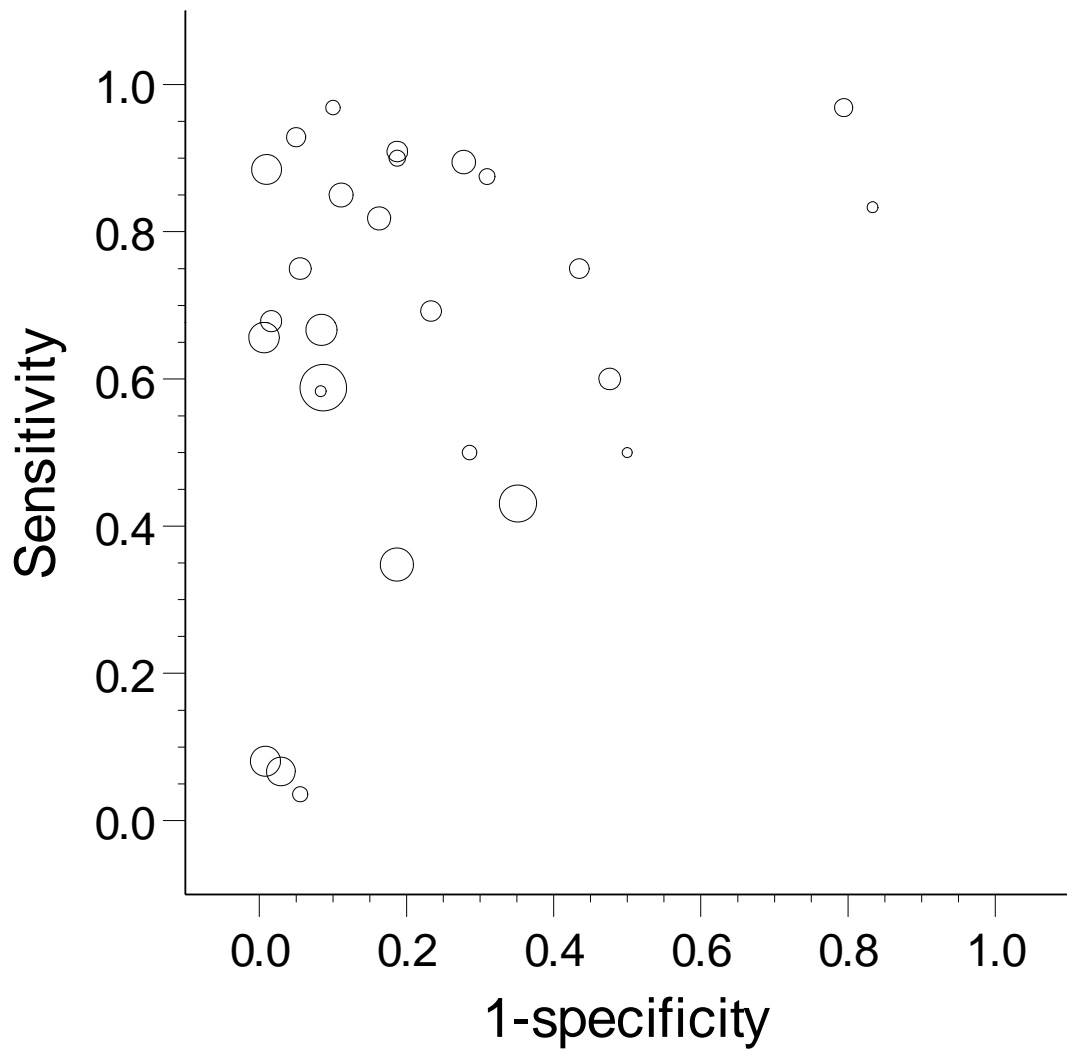
## Why assess quality?

- Problem 1: Bias in primary studies can lead to misleading summary estimates of accuracy
- Problem 2: Results of primary studies may vary
- Quality assessment to guide the interpretation of results in terms of potential for bias and sources of heterogeneity

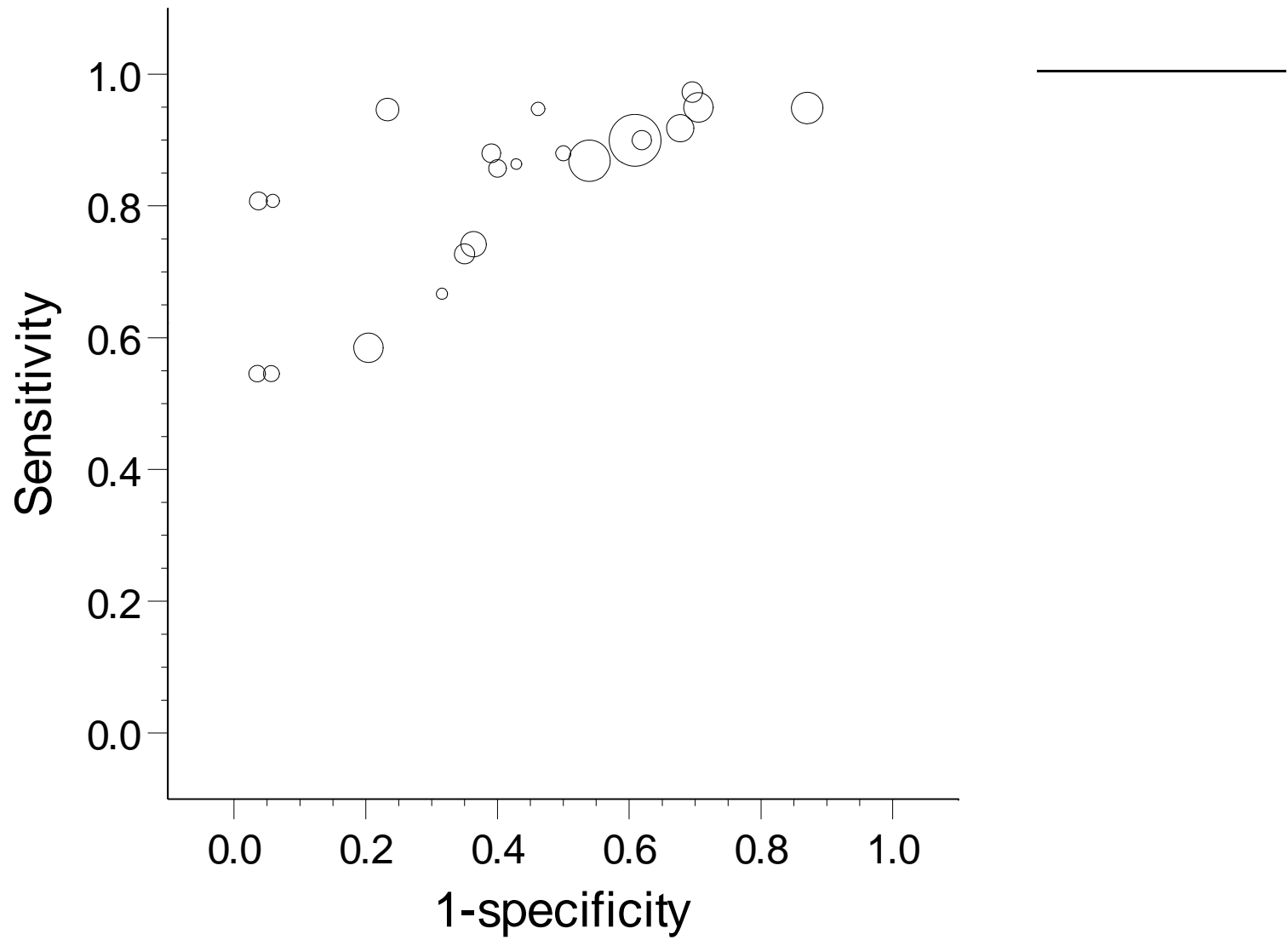
# Echocardiography in Coronary Heart Disease



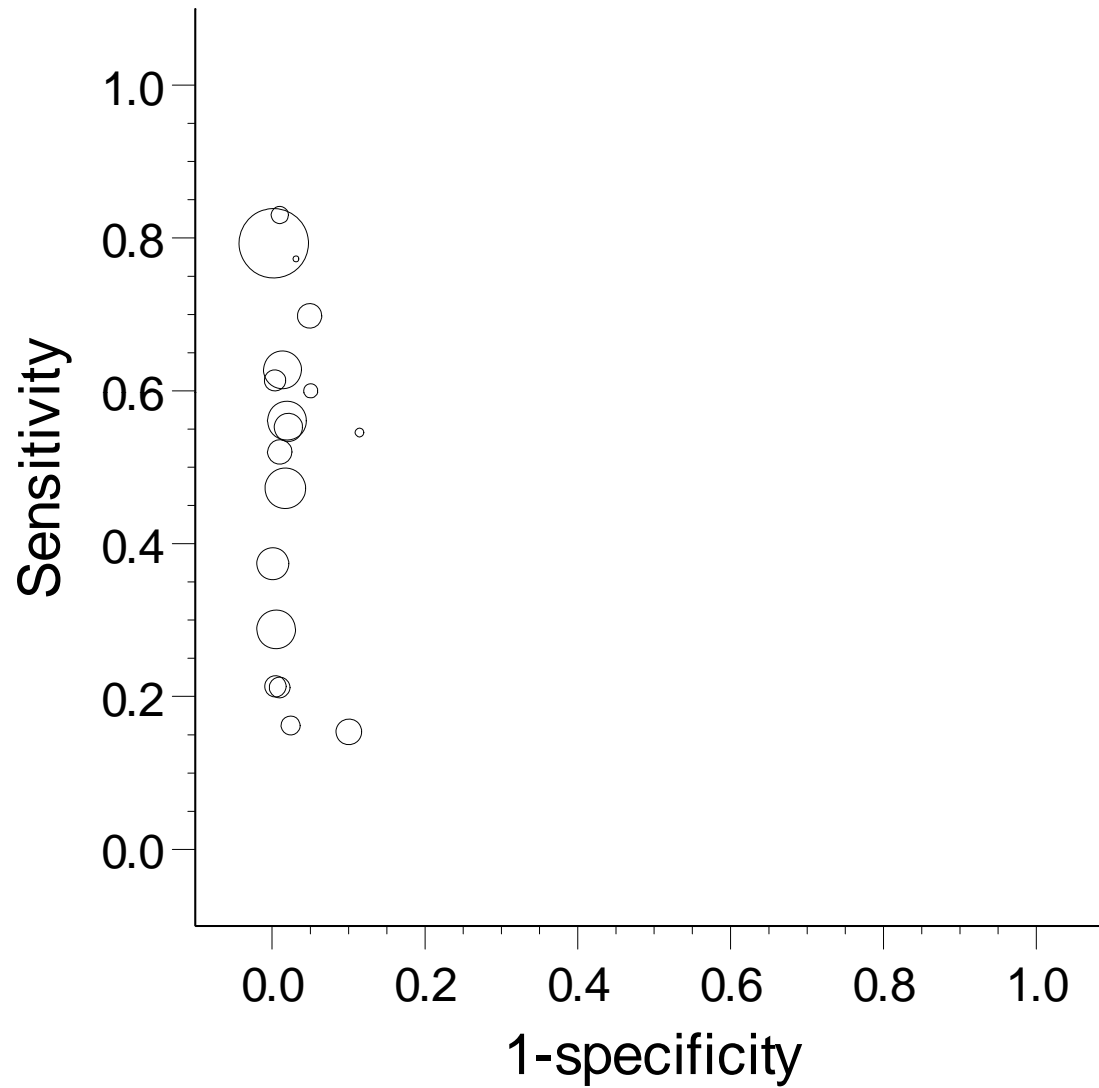
# GLAL in Gram Negative Sepsis



# F/T PSA in the Detection of Prostate cancer



# Dip-stick Testing for Urinary Tract Infection





## Cochrane definition of quality

---

“the methodological quality of a study;  
the degree to which the design and  
conduct of a study fit to the study  
objectives”





# How to assess quality?

---

- Quality assessment tools:
  - Large number of different tools
  - Styles: Quality scores/levels of evidence/  
component approach
  - Cochrane handbook recommends modified  
version of the QUADAS tool



# QUADAS

---

- General tool
- Systematically developed based on empirical evidence and a formal consensus method
- Set of 11 required (strongly suggested) items, and a list of additional items to consider



## QUADAS items

1	Was the spectrum of patients representative of the patients who will receive the test in practice?
2	Is the reference standard likely to correctly classify the target condition?
3	Is the time period between reference standard and index test short enough to be reasonably sure that the target condition did not change between the two tests?
4	Did the whole sample or a random selection of the sample, receive verification using a reference standard of diagnosis?
5	Did patients receive the same reference standard regardless of the index test result?
6	Was the reference standard independent of the index test (i.e. the index test did not form part of the reference standard)?
7	Were the index test results interpreted without knowledge of the results of the reference standard?
8	Were the reference standard results interpreted without knowledge of the results of the index test?
9	Were the same clinical data available when test results were interpreted as would be available when the test is used in practice?
10	Were uninterpretable/ intermediate test results reported?
11	Were withdrawals from the study explained?



# Sources of bias and variation

---

*Whiting P et al. Ann Intern Med. 2004 ; 140(3): 189-202.*

- *overview of sources of bias and variation*

*Whiting P et al. BMC Med Res Methodol. 2003; 3: 25.*

- *development of QUADAS*

*Cochrane Handbook for Reviews of Diagnostic Test Accuracy*



# Basic Test Accuracy Study

---

Series of patients



Index test



Reference standard



Blinded cross-verification



# Problems with spectrum

---

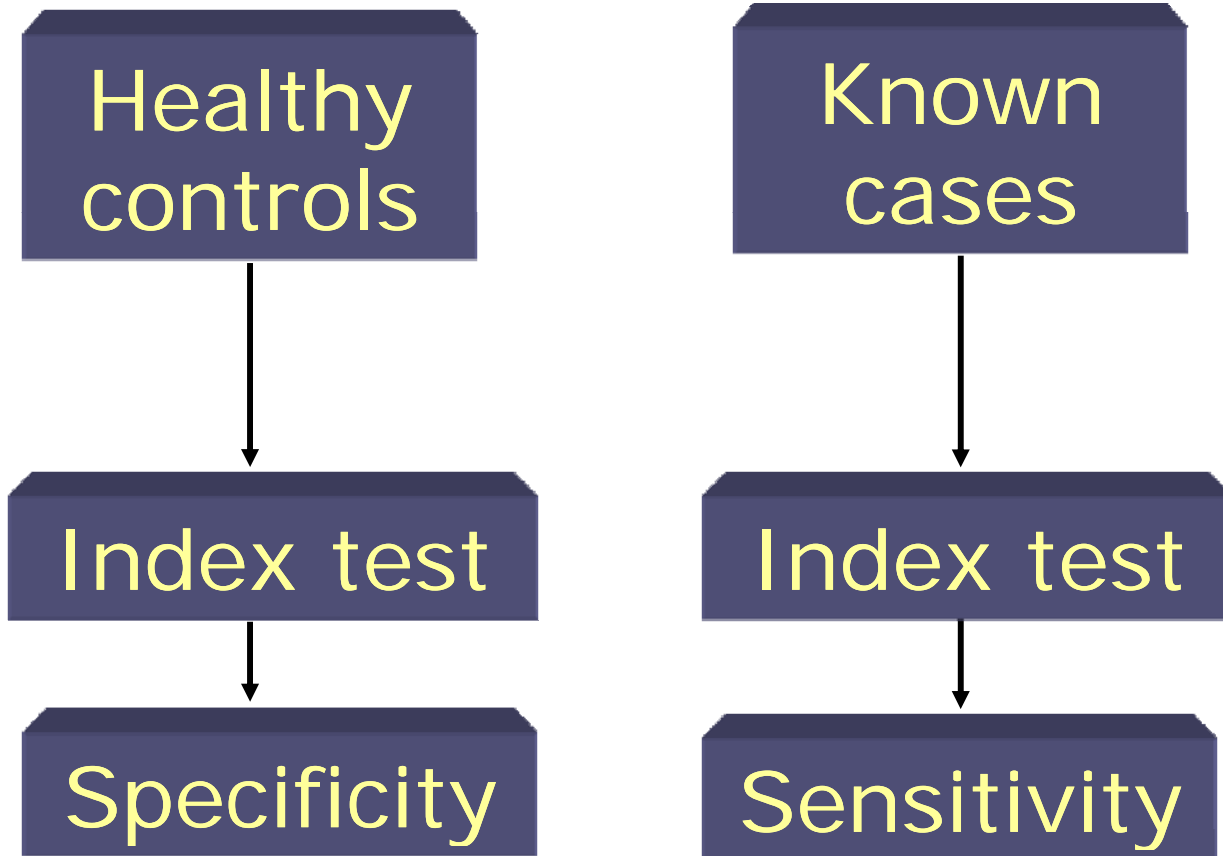
Measures of accuracy vary across patient groups:

- Patient characteristics e.g. age
- Patient selection/Study design
- Setting



# Diagnostic case-control design

---





# Reference standard bias

---

Consecutive series of patients

Index test

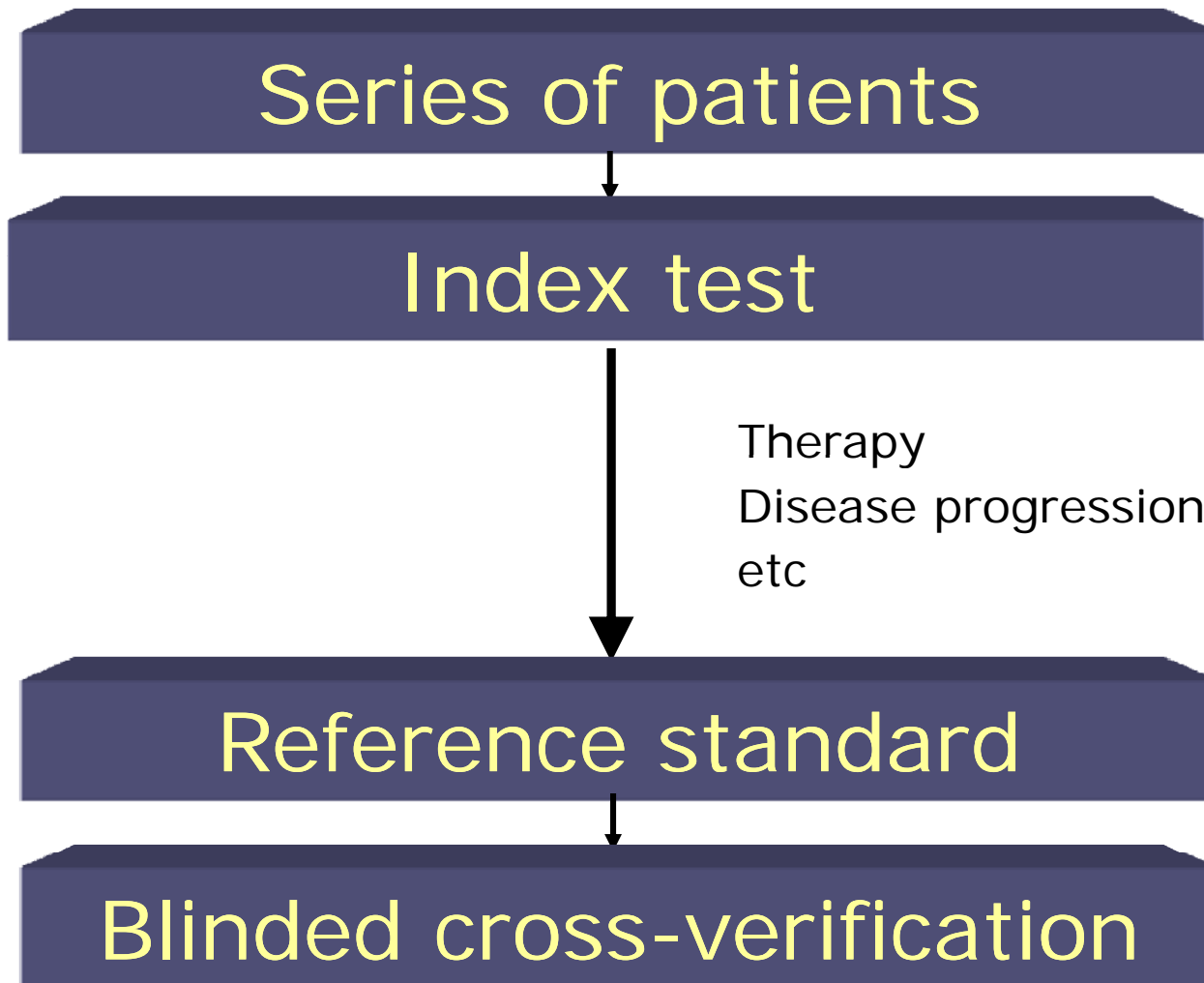
Non optimal reference standard

Blinded cross-verification



# Time between index test and reference standard

---



# Partial verification bias

---

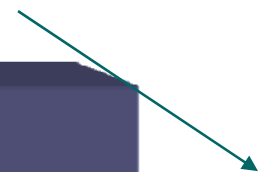
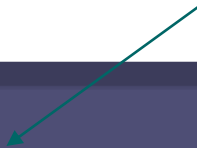
Consecutive series of patients



Index test



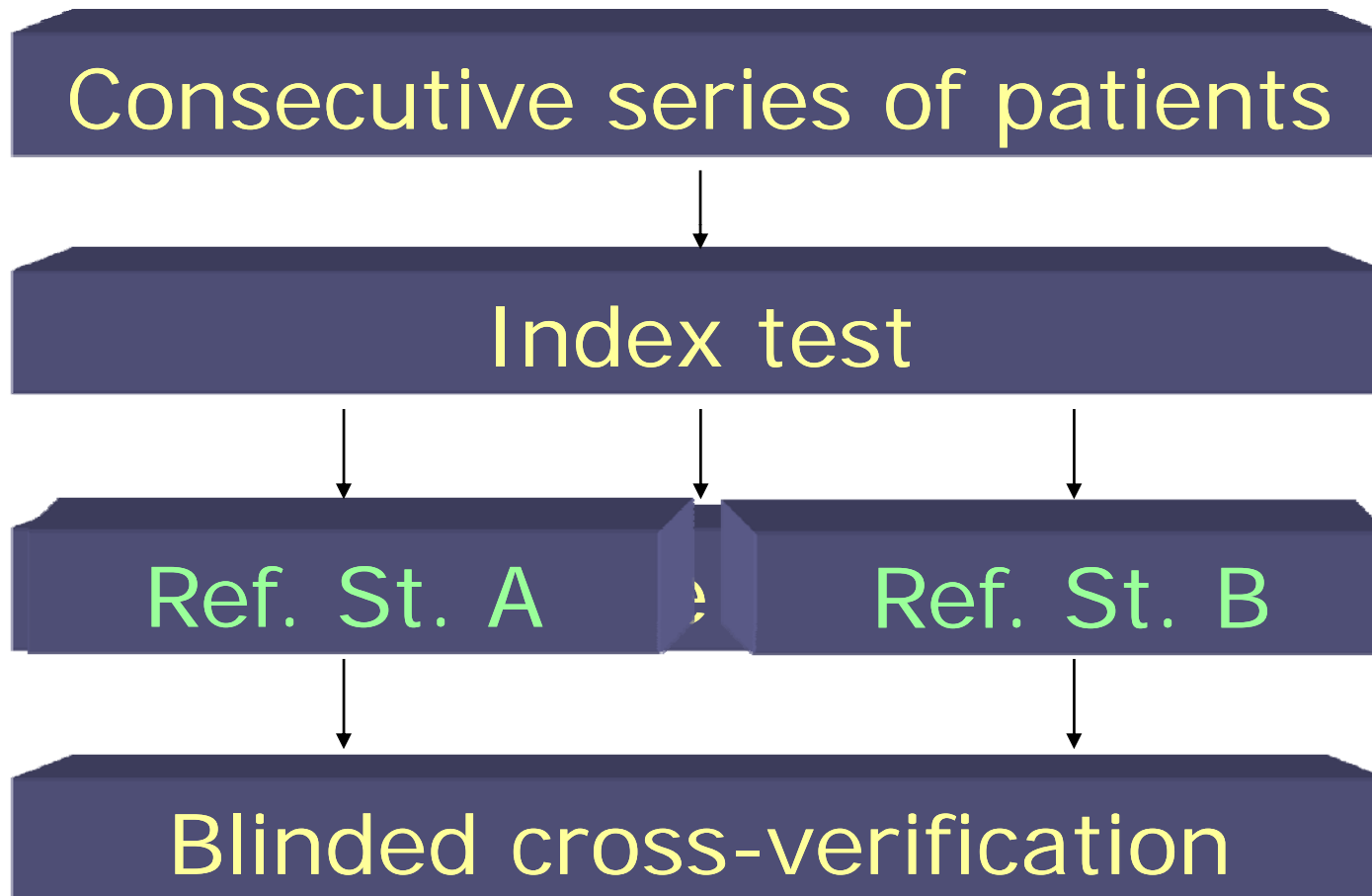
Reference standard



Blinded cross-verification

# Differential verification bias

---





# Incorporation bias

---

Consecutive series of patients

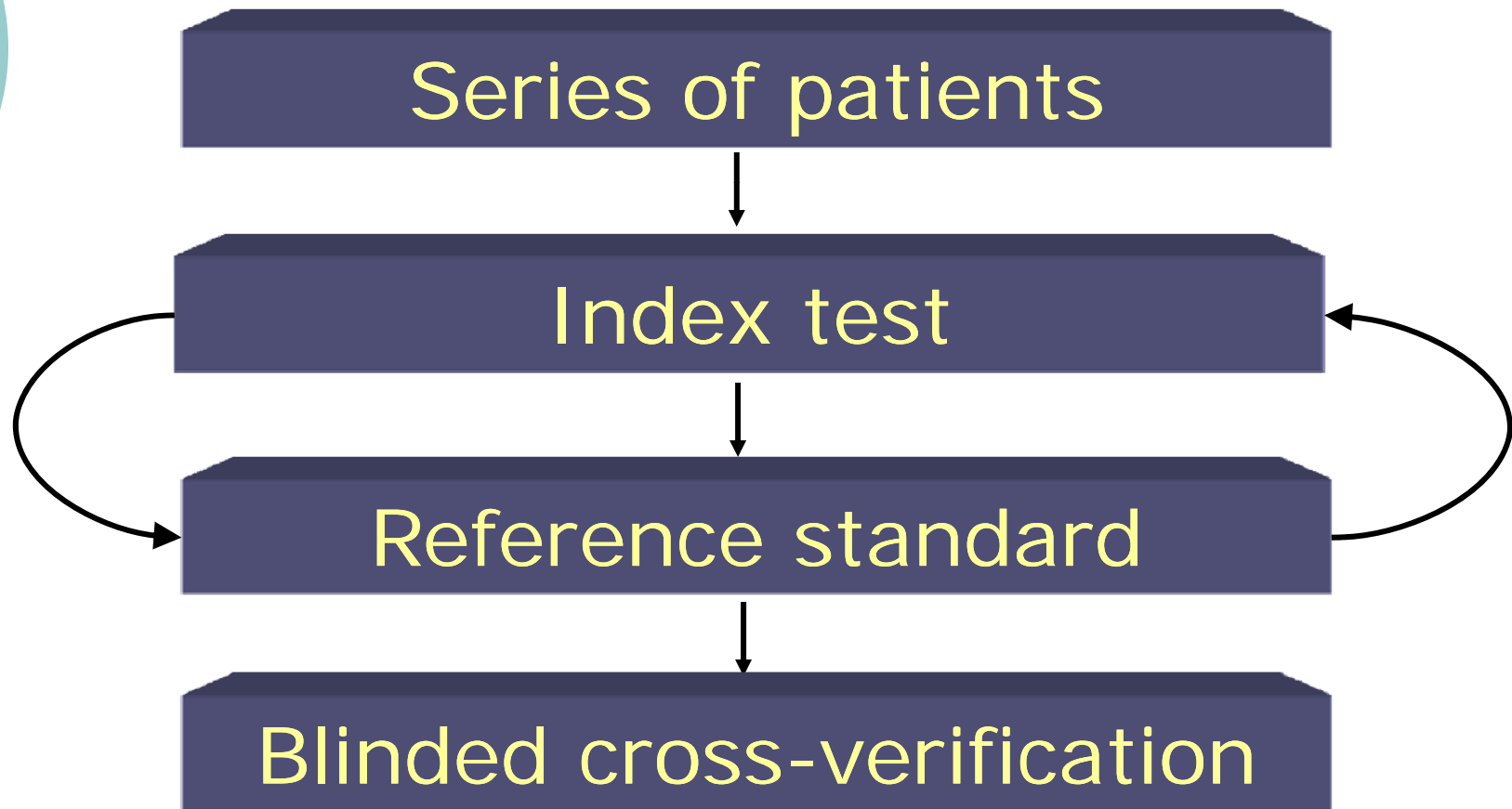
Index test

Index test + other test(s)

Blinded cross-verification

# Blinding

---



# Blinding

---

Series of patients



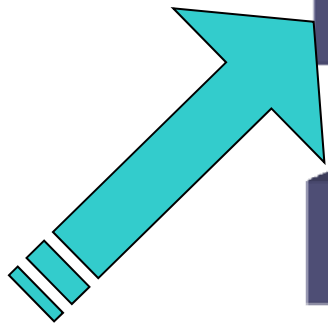
Index test



Reference standard



Blinded cross-verification



**Clinical  
Information**

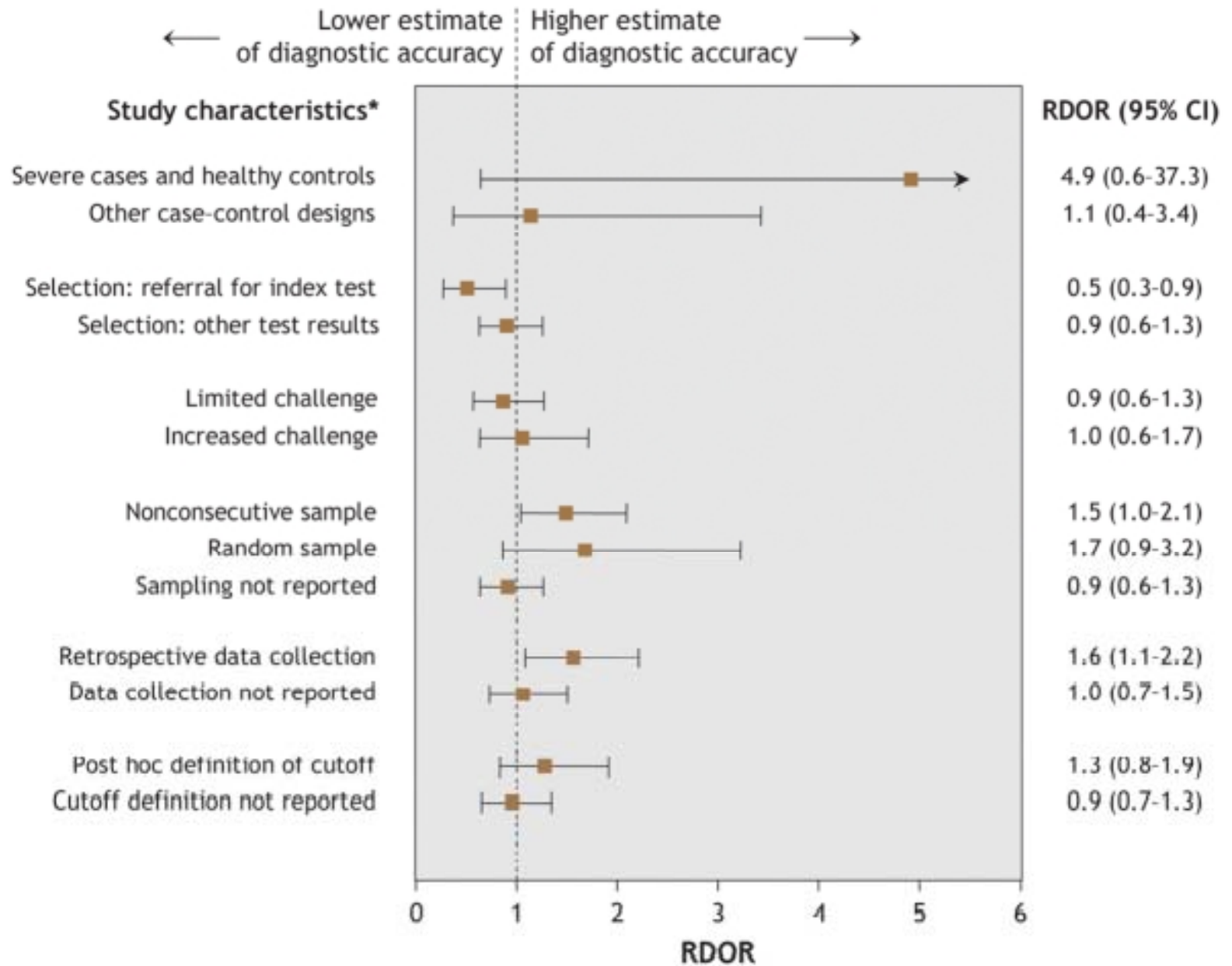


## Two important reporting items

---

- Reporting of uninterpretable/ intermediate test results
- Explanation of withdrawals

		biopsy		
		+	-	
	HPV+	45	68	113
	+/-	20	25	45
	HPV-	7	161	198
		72	254	356







## Assessment of items

---

- All items scored as yes/no/unclear
- Items phrased so that yes indicates absence of bias
- Background document describes how items should be scored



# Practical Issues

---

- Number of assessors
- Background of assessors
- Resolving disagreement
- Piloting the assessment process
- Develop your quality assessment tool



# Your quality assessment tool

---

- Items to include
  - Core items
  - Additional items
    - select from suggested items
    - add your own if other items are important for your review topic
- Produce scoring guidelines specific to your review



## Additional items

12.	If a cut-off value has been used, was it established before the study was started (pre-specified cut-off value)?
13.	Is the technology of the index test likely to have changed since the study was carried out?
14.	Did the study provide a clear definition of what was considered to be a “positive” result?
15.	Was treatment started after the index test was carried out but before the reference standard was performed?
16.	Was treatment started after the reference standard was carried out but before the index test was performed?
17.	Were data on observer variation reported?
18.	Were data on instrument variation reported?
19.	Were data presented for appropriate patient sub-groups?
20.	Was an appropriate sample size included?
21.	Were objectives pre-specified?

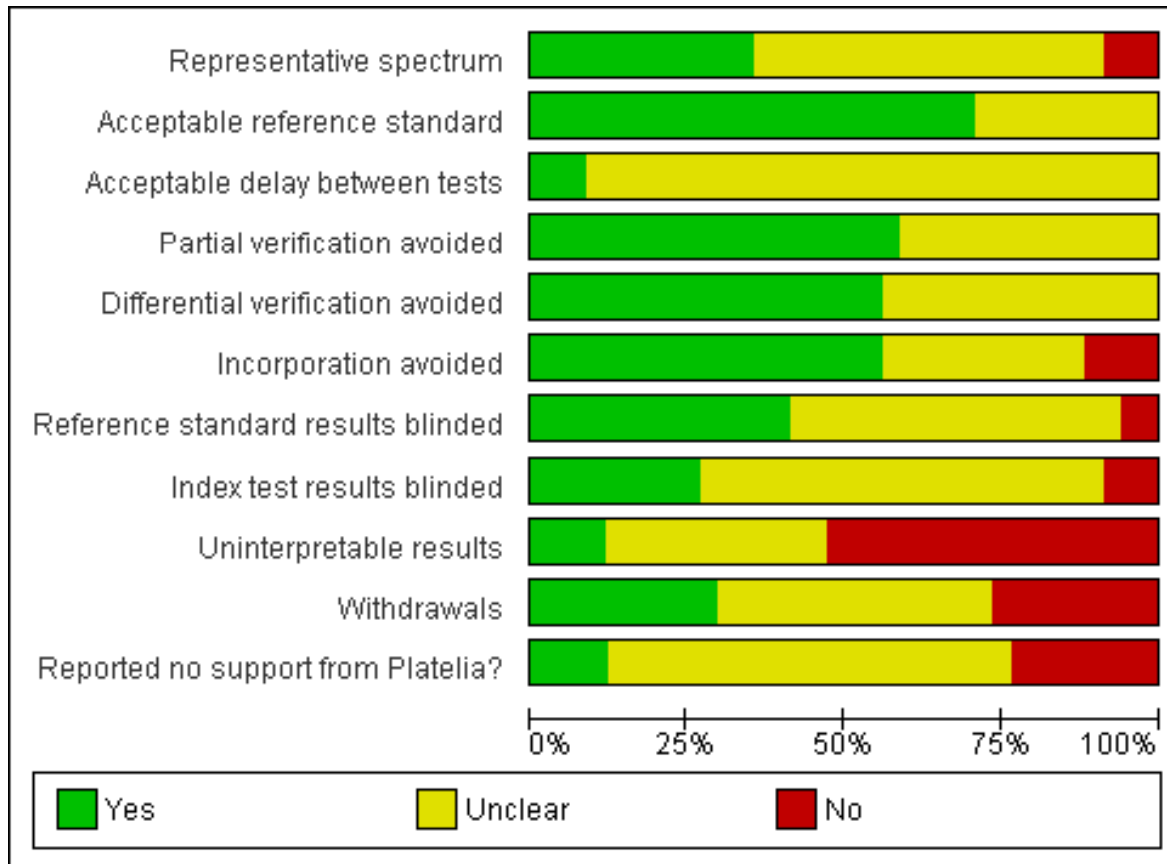


# Presenting study quality

---

- Present the results of the quality assessment:
  - Graphically

# Methodological Quality Graph



Review authors' judgments about each methodological quality item presented as percentages across all included studies.



# Incorporating study quality

---

- Present the results of the quality assessment:
  - In a table
  - Graphically



	Representative spectrum	Acceptable reference standard	Acceptable delay between tests	Partial verification avoided	Differential verification avoided	Incorporation avoided	Reference standard results blinded	Index test results blinded	Uninterpretable results	Withdrawals	Reported no support from Platelia?
Adam 2004	+	+	?	+	+	+	+	+	-	+	?
Allan 2005	+	+	?	+	+	+	+	?	-	-	-
Becker 2003	+	+	?	+	+	+	+	+	+	+	?
Bretagne 1998	?	+	?	?	?	+	?	?	-	-	?
Buchheidt 2004	?	+	?	+	+	-	?	?	-	-	+
Challier 2004	-	+	?	+	+	+	+	+	-	?	?
Doermann 2002	?	+	?	+	+	-	?	?	?	?	?
Fortun 2001	-	+	?	?	?	+	+	?	-	-	?
Herbrecht 2002	+	+	?	+	+	+	+	?	-	-	?
Husain 2004	+	+	+	+	+	+	+	+	-	+	-
Machetti 1998	?	+	?	?	+	+	?	?	-	-	+
Maertens 2002	+	+	+	+	+	+	-	+	-	+	?
Sulahian 2001	?	?	?	?	?	?	?	?	?	?	?
White 2005	?	+	?	+	+	+	+	+	-	?	-
Williamson 2000	+	+	?	+	+	+	+	+	-	+	?
Yoo 2005	+	+	?	+	?	-	?	?	-	+	-

## Methodological quality summary.

Review authors' judgments about each methodological quality item for each included study.





# Using study quality

---

- Present the results of the quality assessment:
  - In a table
  - Graphically
- Investigate individual quality items as potential sources of heterogeneity
- Basis for recommendations for future research



## Formal incorporation of study quality

---

- Restricting the analysis to high quality studies
- Stratified analysis according to presence/absence of specific quality criteria
- Sensitivity analyses to investigate robustness of results
- Investigate several features simultaneously using meta-regression analysis

Always: define methodological criteria a priori



## Problems with quality assessment

---

- Not as straightforward as it might sound!
- Hampered by poor reporting
- Quality assessment is subjective
- Quality scores are not recommended
- Statistical incorporation of quality problematic with limited studies



**Now it's your turn!**



## Example: BNP for heart failure

---

- **Aim:** To assess the accuracy of BNP for the diagnosis of heart failure
- In small groups:
  1. Produce a flow diagram for the study
  2. Discuss (attention to what has been done, what is missing and possible consequences):
    - QUADAS item 1 (spectrum)
    - QUADAS items 2, 4 and 5 (verification)
  3. Discuss the conclusion of the authors



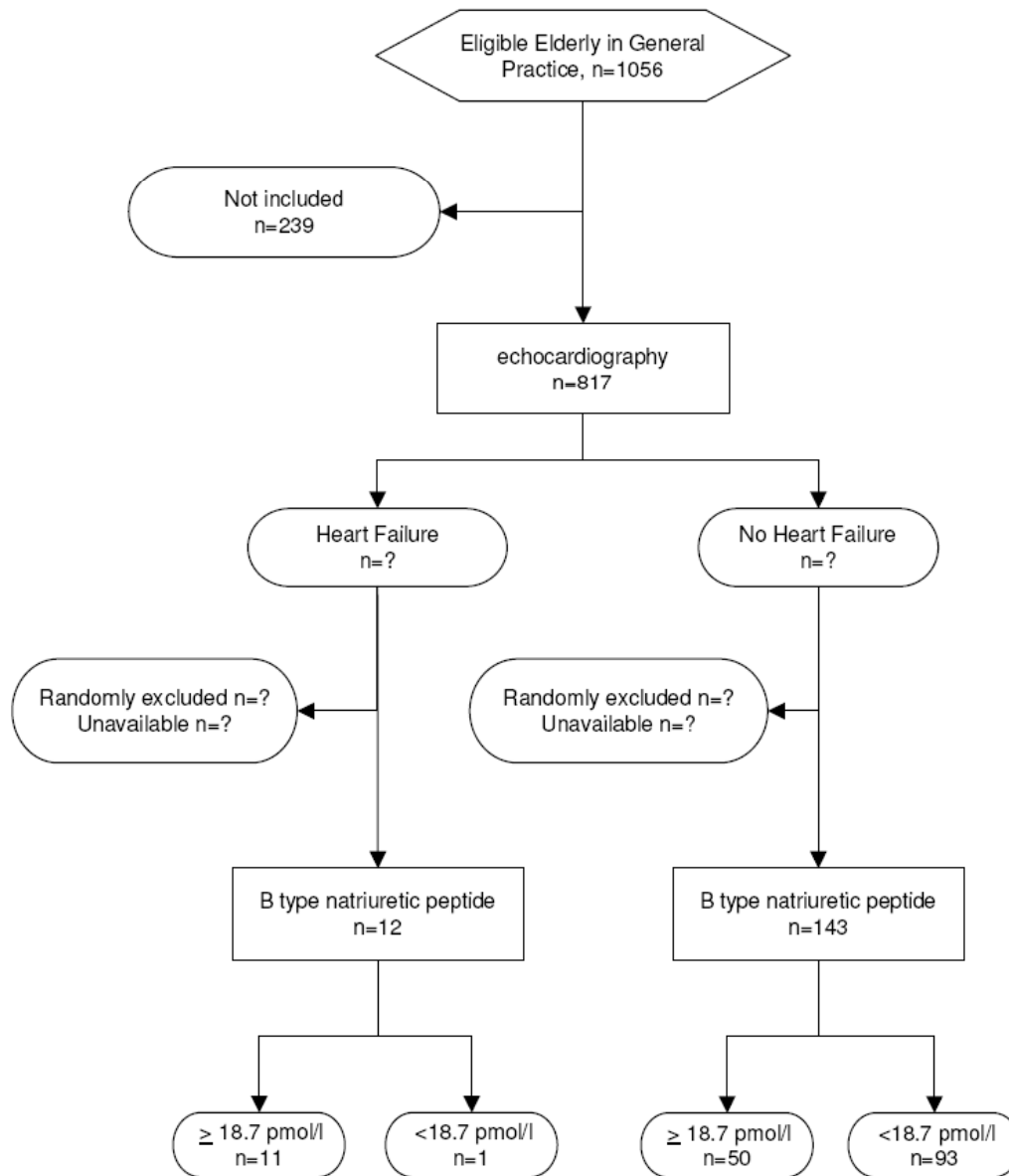
## QUADAS items

1	Was the spectrum of patients representative of the patients who will receive the test in practice?
2	Is the reference standard likely to correctly classify the target condition?
3	Is the time period between reference standard and index test short enough to be reasonably sure that the target condition did not change between the two tests?
4	Did the whole sample or a random selection of the sample, receive verification using a reference standard of diagnosis?
5	Did patients receive the same reference standard regardless of the index test result?
6	Was the reference standard independent of the index test (i.e. the index test did not form part of the reference standard)?
7	Were the index test results interpreted without knowledge of the results of the reference standard?
8	Were the reference standard results interpreted without knowledge of the results of the index test?
9	Were the same clinical data available when test results were interpreted as would be available when the test is used in practice?
10	Were uninterpretable/ intermediate test results reported?
11	Were withdrawals from the study explained?



Biochemical diagnosis of ventricular dysfunction in elderly patients in general practice: observational study. *BMJ* 2000;320:9906-8

# Flowchart





# Conclusions

---

- Quality assessment is essential, but exact effects not (yet) known
- The QUADAS tool should be used as a starting point
- Study quality should be incorporated into all reviews
- The quality items and scoring guidelines should be tailored to your review question
- The results of the quality assessment should be presented
- No quality scores and cut-offs for 'good' quality